

# SOUTH CENTRAL PA MRC NEWSLETTER

31 March 2023

## April is National Volunteer Month!

This month is dedicated to honoring all of the volunteers in our communities as well as encouraging volunteerism throughout the month. Volunteering is a chance to give back to your community, and volunteering with the MRC is a chance to help keep your family, friends and community safe and healthy!

MRC leadership is grateful for all of our dedicated volunteers who give of themselves in so many ways. Your selfless contribution of time and resources have made a huge impact on our community!


Please take time this month to celebrate the goodness in yourself and your fellow volunteers!



## COVID-19 Public Health Emergency Transition

While the federal Public Health Emergency (PHE) for COVID-19 will expire the end of the day on May 11, 2023, government response to the spread of the causative virus remains a public health priority. The US Department of Health & Human Services (HHS) issued an informative Fact Sheet that outlines what will and will not be affected by the expiration of the PHE. Please use this link to access the Fact Sheet: <https://www.hhs.gov/about/news/2023/02/09/fact-sheet-covid-19-public-health-emergency-transition-roadmap.html>

We have come to this point in our fight against COVID-19 due to tremendous efforts to mitigate its greatest impacts. Volunteers like you are truly LIFESAVERS!

 Find us on Facebook!  
@South.Central.Pennsylvania.Medical.Reserve.Corps  
Our new email address is: [MRC@ehsf.org](mailto:MRC@ehsf.org)

## VOLUNTEER SPOTLIGHT: MARNIE ANDERSON

Each month we highlight one of our superstar volunteers as a way of showing appreciation from SCPA MRC leadership.

Marnie Anderson started volunteering for the SCPA MRC during Spring of 2021, in response to the COVID-19 pandemic. Her first MRC deployment was as a support volunteer at a mass COVID-19 vaccine clinic at the U-Haul building in Carlisle, PA. She loved the energy and vibe at the clinic, as people were so happy and relieved to be able to get that first round of the vaccine.

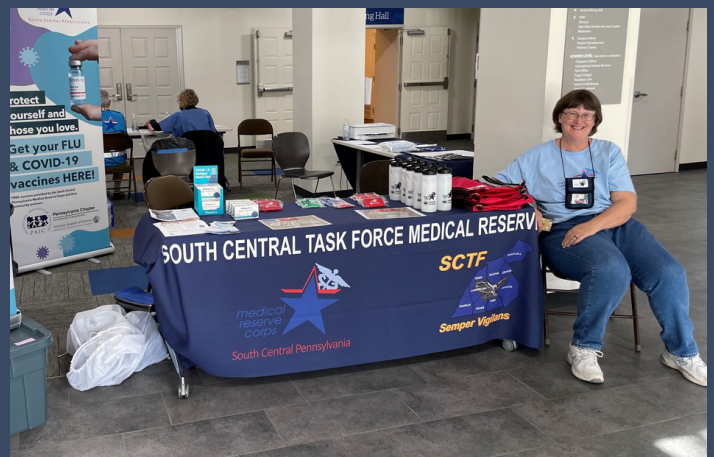
Marnie has since volunteered for multiple other COVID/Flu vaccine clinics, and volunteered as a vaccine educator across central PA. She especially enjoys talking with college students who are making their own medical decisions for the first time.

Marnie retired after many years working with infants and toddlers with developmental delays and disabilities and their families as an early intervention specialist, developmental evaluation specialist, and part of a NICU developmental follow-up clinic. She also taught Early Education at HACC (Harrisburg, Lancaster, Gettysburg, & Virtual campuses) and Special Education as an adjunct professor at Messiah University.

Please join us in thanking Marnie for her many contributions!



Marnie Anderson



Marnie Anderson:  
Ready for Vaccine Education visitors!

## COMMUNITY WELLBEING: PREPARING FOR A FLOOD

NASA and other models predict that hurricanes will involve more intense rainfall in the future. Experts also predict that wetter weather in general may become more common in the Commonwealth of PA. Combined with land development that creates more impervious surfaces and therefore increased runoff to nearby waterways, flooding in the area is expected to increase.

The following information is from the CDC Natural Disasters & Severe Weather site.

Floods, big or small, can have devastating effects on your home and your family. You can take steps to reduce the harm caused by flooding. Learn how to prepare for a flood, stay safe during a flood, and protect your health when you return home after a flood.

Learn how to prepare for a flood, including how to create a plan, supplies you'll need, and getting your home ready.

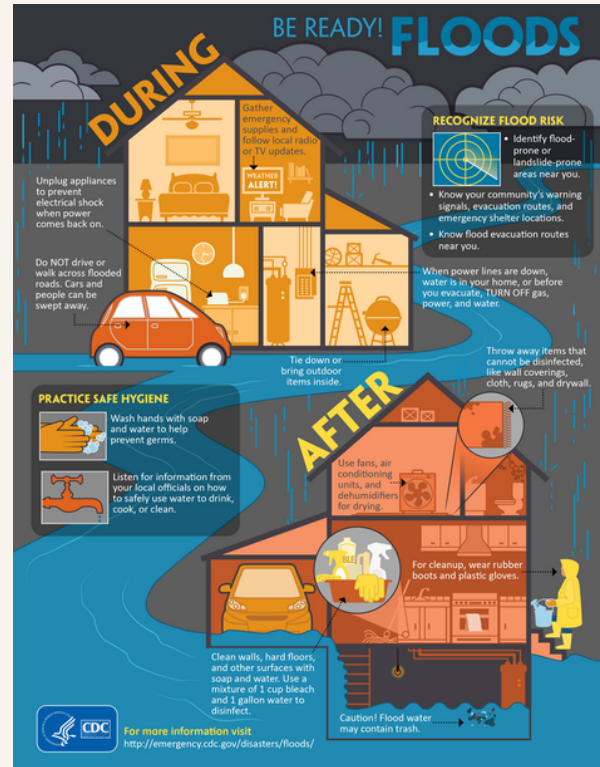
<https://www.cdc.gov/disasters/floods/readiness.html>

Floodwater and standing water can be dangerous. Protect yourself and your loved ones from risks brought on by floods.

<https://www.cdc.gov/disasters/floods/index.html>

Returning home after a flood? Be aware that your home may be contaminated with mold or sewage. Take steps to keep yourself and your loved ones safe.

<https://www.cdc.gov/disasters/floods/after.html>



### UPCOMING DEPLOYMENTS

Sign-up links will be provided in SERV PA messages.

#### Fit Testing

- o 4/4 - Pleasant Acres Nursing and Rehab. Center (York County)
- o 4/11- SpiriTrust Lutheran, The Village at Gettysburg (Adams County)
- o 4/12 & 4/13- Bethany Village Retirement Center (Cumberland County)
- o 4/14 - SpiriTrust Lutheran, The Village at Utz Terrace (York County)
- o 4/21 - SpiritTrust Lutheran, The Village at Luther Ridge (Franklin County)
- o 4/25 - Spiritrust Lutheran The Village at Shrewsbury (York County)

#### Vaccination Clinics & Education

- o 4/8 & 4/14 - Union Lutheran Church (York City)
  - o 4/11 - 50+ EXPO at Hershey Lodge (Dauphin County)
  - o 4/25 - Millersville Univ. (Lancaster County)
- Library Vaccine Education
- o 4/8 & 4/14 - Union Lutheran Church (York City)
  - o 4/30 Healthy Kids Day (York County)

## TRAINING OPPORTUNITIES

Two training courses are available for your consideration:

- 4/11 - HIV Education and Training Series: Infection Prevention, Self Protection, & PEP Utilization  
<https://www.maaetc.org/events/view/23016>
- 4/12 - Red Cross Shelter Fundamentals training course (in person, Harrisburg) Registration available in TRAIN PA  
[https://www.train.org/pa/course/1085489/live\\_event](https://www.train.org/pa/course/1085489/live_event)

The following FEMA courses are required for all MRC volunteers:

- IS-700.B: An Introduction to the National Incident Management System:  
<https://www.train.org/pa/course/1078831/>
- IS-100.C: Introduction to the Incident Command System:  
<https://www.train.org/pa/course/1078825/>

After successful completion of these courses, please ensure the course is listed in the training section of your SERV PA profile:

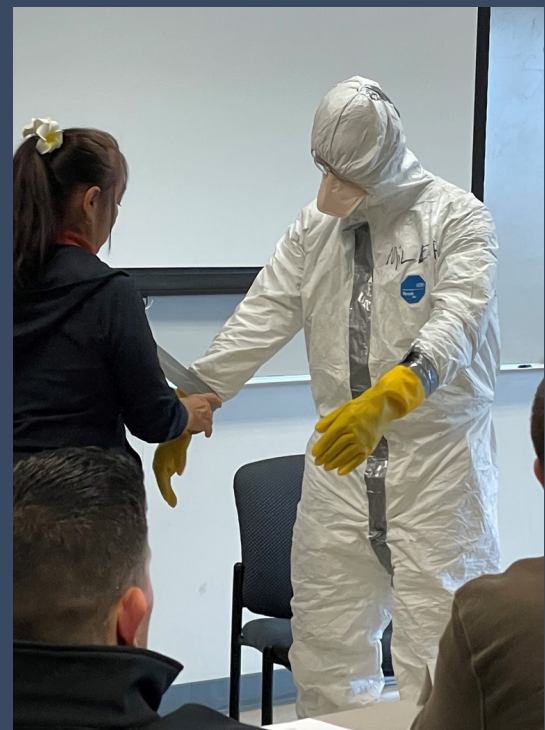
<https://serv.pa.gov/profile>

First Aid/CPR/AED/Blood Borne Pathogens and Behavioral Health courses are coming soon. Stay tuned!

## COMING SOON: VOLUNTEER WEBINARS!

Quarterly webinars for volunteers will be scheduled for June 7, September 6, and December 6, 2023.

Look for announcements via SERV PA in the coming weeks!



Environmental Health Training  
(Lancaster County)

## USEFUL LINKS

- New SCPA MRC mailbox: [mrc@ehsf.org](mailto:mrc@ehsf.org)
- SERV PA: <https://serv.pa.gov>
- MRC Orientation Video:  
<https://www.youtube.com/watch?v=jwmzum7W5X4&list=PLYVbq8oDgL9O9nhtOFnf4XfNhO074lgeK&index=5>
- TRAIN PA: <https://pa.train.org/pa/login>